

**⚠ WARNING!**

The shock absorber is provided with a separate type reservoir filled with high pressure nitrogen gas. To prevent danger of explosion, study and make certain that you fully understand the following information before handling the shock absorber. The manufacturer cannot be held responsible for damage to property or personal injury that may result from improper handling.

1. Never tamper with or attempt to disassemble the cylinder or the reservoir.

2. Never expose the shock absorber to an open flame or other excessive heat. The shock absorber may otherwise explode due to too high pressure.

3. Be careful not to damage any part of the gas reservoir. A damaged gas reservoir will impair the damping performance or cause malfunction.

4. Take care not to scratch the contact surface of the piston rod of the cylinder; oil could otherwise leak out.

5. Never attempt to remove the plug at the bottom of the nitrogen gas reservoir. Any attempt to remove the plug implies serious danger.

6. When scrapping the shock absorber, follow the instructions for disposal.

**6**

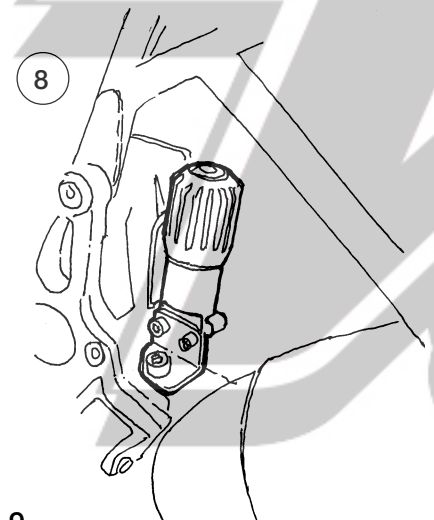
Loosen first the lower shock absorber bracket, then the upper and take the original shock absorber out downwards.

**7**

Mount the Öhlins shock absorber in reverse order, first the upper attachment then the lower one.

**8**

Fit the new prespanner adjuster. Use the original bolt. Let the hose go in soft turns and make sure it will not be bent or squeezed.



**9**

Put the saddle and toolbox lid back in position.

**10**

Continue your work according to owners manual.

# Mounting Instructions

BM 049 - BMW R1150R

## Kit contents:

Shock absorber 46 DRS	BM 049	
Sticker Öhlins	00192-01	2
Memo sticker	01180-01	1
Owners manual		1

## Set-up data

Lenght	366 mm
Stroke	56 mm
Rebound adjustment	16 clicks
Spring pre-load:	10 mm



ADVANCED SUSPENSION TECHNOLOGY

Öhlins Racing AB, Box 722, S-194 27 Upplands Väsby, Sweden.

Phone +46 8 590 025 00, fax +46 8 590 025 80.

E-mail: info@ohlins.se

www.ohlins.com

BM049, Issued 01 03 14



ADVANCED SUSPENSION TECHNOLOGY

## Safety signals

Important information concerning safety is distinguished in this manual by the following notations.



The Safety alert symbol means: **Caution! Your safety is involved.**

### WARNING!

Failure to follow warning instructions could result in **severe or fatal injury** to anyone working with, inspecting or using the suspension, or to bystanders.

### CAUTION!

Caution indicates that special precautions must be taken to avoid damage to the suspension.

### NOTE!

This indicates information that is of importance with regard to procedures.

## Kit contents

Before installing the shock absorber, please check the contents of the kit, listed on the front page of this instruction. If anything is missing, contact your Öhlins dealer.

### NOTE!

During storage and transportation, especially at high ambient temperature, the oil and grease used for assembling may run out inside the packing and damage the expanded polystyrene packing material. This is not unusual and is in no way detrimental to the shock absorber.

## Before you start

### WARNING!

Installing a shock absorber, that is not approved by the vehicle manufacturer, may affect the stability of your vehicle. Öhlins Racing AB cannot be held responsible for any personal injury or damage whatsoever that may occur after fitting the shock absorber. Contact an Öhlins dealer or other qualified person for advice.

Öhlins Racing AB can not be held responsible for any damage whatsoever to shock absorber or vehicle, or injury to persons, if the instructions for fitting and maintenance are not followed exactly. Similarly, the warranty will become null and void if the instructions are not adhered to.

### WARNING!

Please study and make certain that you fully understand all the mounting instructions and the owner's manuals before handling this shock absorber kit. If you have any questions regarding proper installation procedures, contact an Öhlins dealer or other qualified person.

### WARNING!

The vehicle service manual must be referred to when installing the Öhlins shock absorber.

### NOTE!

Öhlins products are subject to continual improvement and development. Consequently, although these instructions include the most up-to-date information available at the time of printing, there may be minor differences between your suspension and this manual. Please consult your Öhlins dealer if you have any questions with regard to the contents of the manual.

## Mounting Instructions

1

Put the motorcycle on a stand so the rear wheel is clear of the ground. The swing arm must be free, so the suspension is unloaded. Make sure it's steadily fixed so it will not fall over.

### WARNING!

1. It's advisable to have an Öhlins dealer or other qualified person to fit your shock absorber.  
2. Instructions in the vehicle service manual are to be followed when changing the shock absorber.  
3. When working on a lifted vehicle it must be securely supported to prevent it from falling.

2

Open the toolbox and loosen the rear seat and lift it off.

3

Loosen the cone shaped connection cover of the left silencer bracket and pull it outwards. This makes it easier to reach the necessary bolts.

4

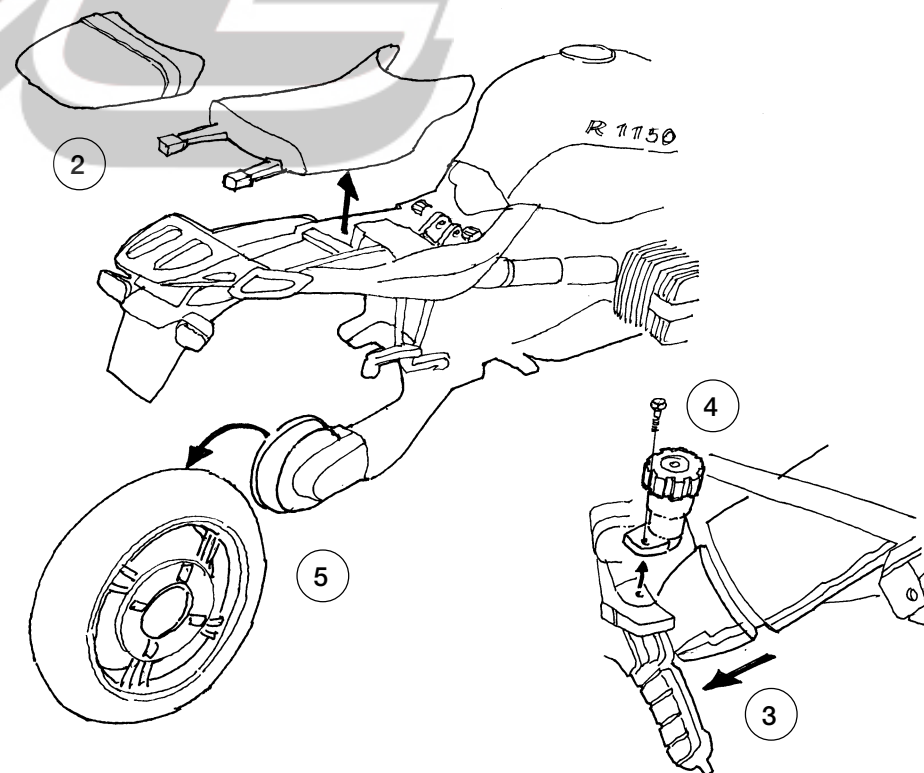
Loosen and remove the original spring prespanning adjuster, located just above the cone shaped cover.

5

Remove the rear wheel. See the motorcycles workshop manual.

### NOTE!

Make sure that all bolts are tightened to the correct torque and that nothing fouls or restricts movement of the shock absorber when the suspension is being fully compressed or extended. Check with the Workshop manual for the motorcycle.



© Öhlins Racing AB.  
All rights reserved.

Any reprinting or unauthorized use without the written permission of Öhlins Racing AB is prohibited.  
Printed in Sweden.